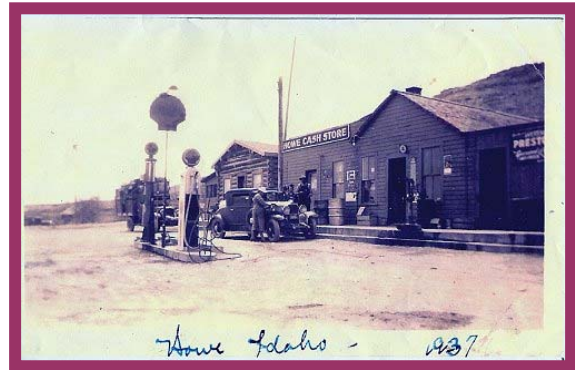
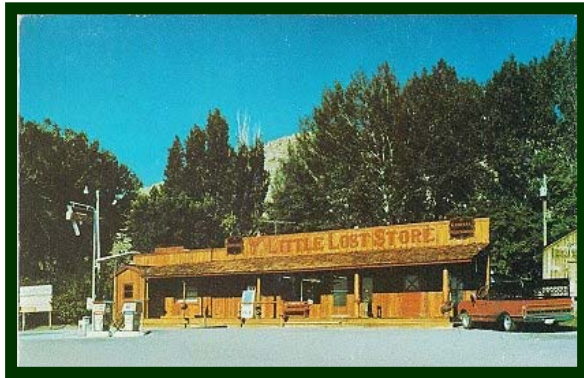
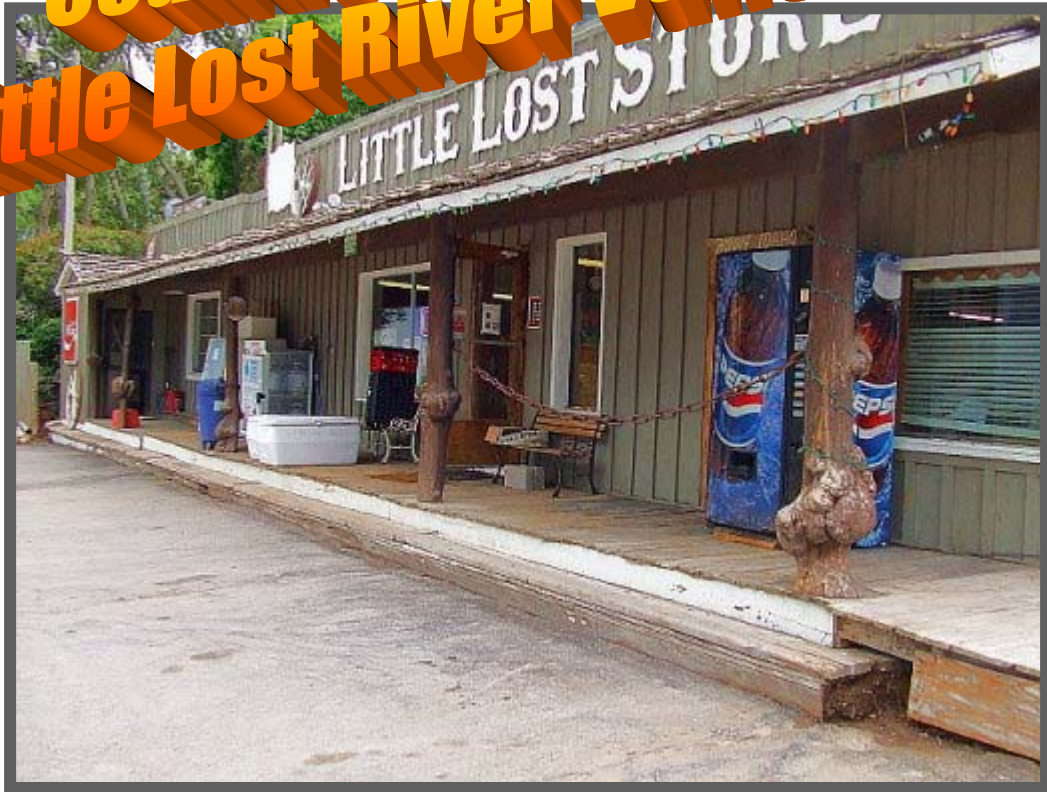


Country Store in Little Lost River Valley



\$136,000

Perfect business opportunity!

* Landmark country store on approx 3.4 acres in Howe, *
* ID. Attached three bedroom, 1 bath living quarters. *
* Plenty of room in the back for horses! *
* * * * *



This is a real country store – down to the original oak hardwood flooring! Lots of charm and character!



The living quarters are spacious and comfortable. Three bedrooms, 1 bath with big kitchen, dining area and living room.



Located next to Heide's German Restaurant, whose owners wish to retire! Both businesses, (each has living quarters!) make a perfect opportunity for a partnership or extended family operation!

Both offered by Idaho Land Company



This property consists of nearly three and half acres of land – perfect horse set up and easy riding out into the hills behind town.

Information:

Store and Living quarters – approx 2500 +/- sq feet
Living quarters is connected to the store and includes 3 bedrooms, large kitchen with dining area, spacious living room, big utility area with lots of storage.

Property is on city water and has its own private septic (pumped once a year – per owner.)

Included items:

Residence – refrigerator, dishwasher, pellet stove.
Store - 3 large coolers, ice chest, microwave, pizza cooker, till, pepsi machine

Other store features;

Swamp Cooler, Stand alone furnace (owner says does a good job!), ½ bath, large office area, lounge/snack area
Gas pumps with above ground tanks.

Howe's country store has always enjoyed a large tourist, hunting and fishing clientele, in addition to supporting the local community for its grocery needs. The store and Heide's German Restaurant compliment each other tremendously, making a perfect stopping point at the intersection of Highway 33 and Little Lost Highway.