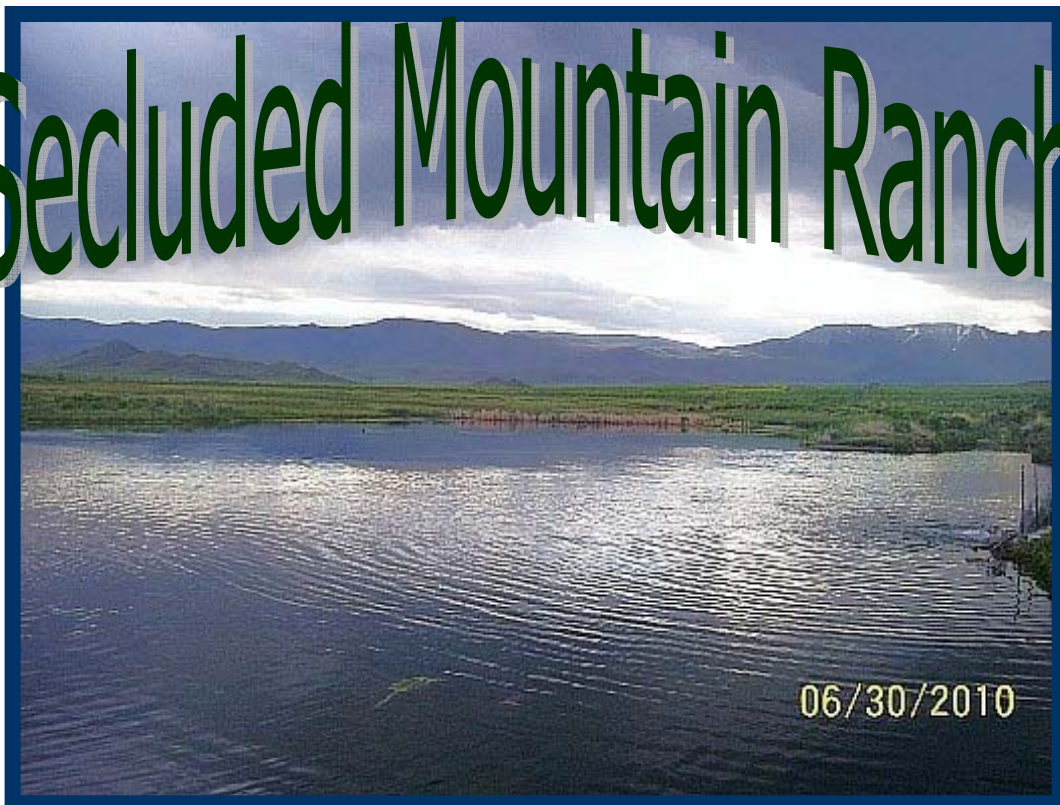


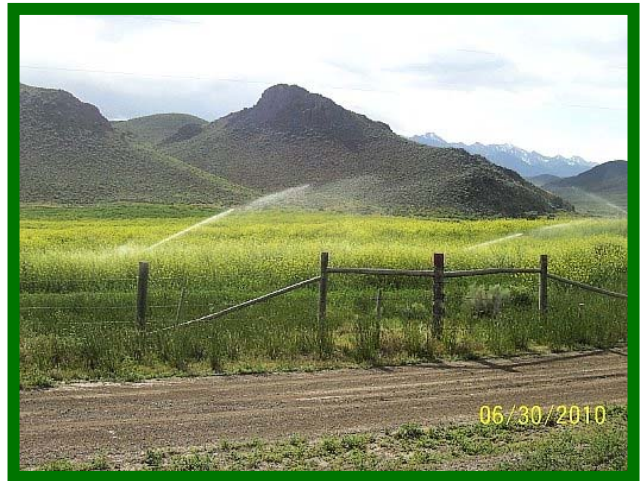
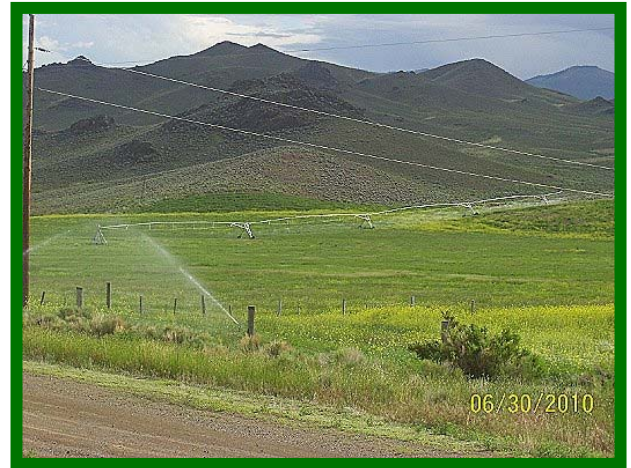
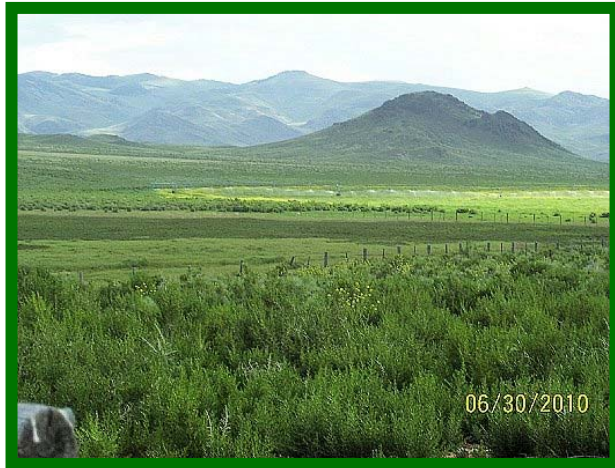
Secluded Mountain Ranch



\$3,900,000

*This working ranch is a Sportsman's Retreat!
End of the road and bordered by BLM!*

Very private and secluded ranch features natural springs which feed three ponds – providing excellent fishing and waterfowl habitat. Watch herds of elk, deer and antelope – frequent visitors to the property. Approximately 500 acres of which about 250 are irrigated hay fields under pivot.



Lush pastures, green hillsides, and surrounding majestic mountains – a one of a kind secluded ranch setting.

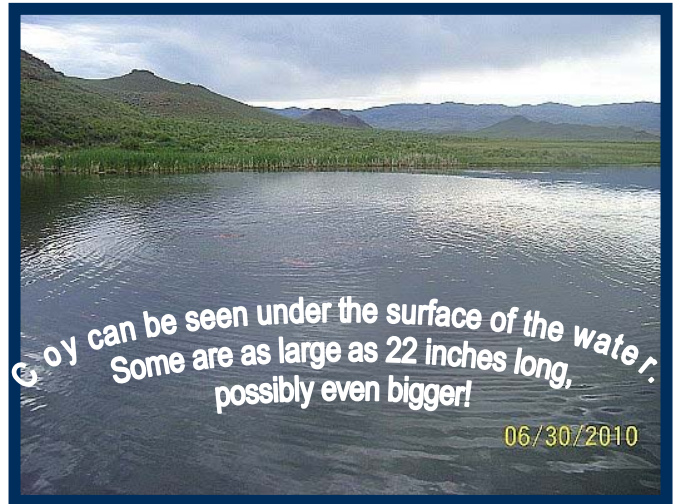
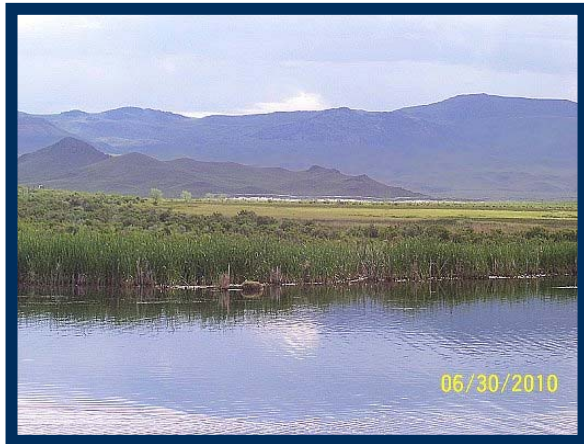
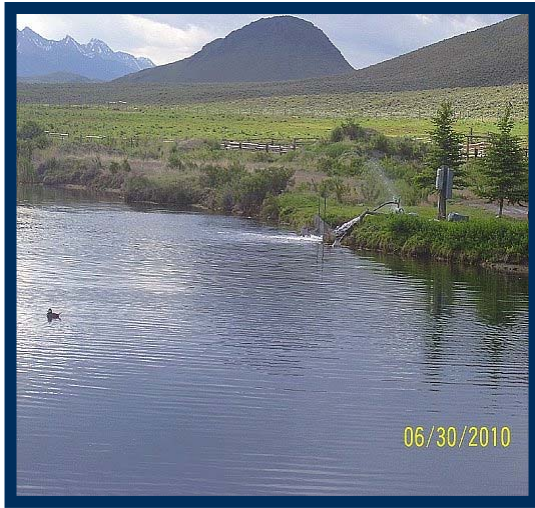


The custom ranch style home is spacious and comfortable, with vaulted ceilings, large picture windows, and a wonderful patio for family and friends to gather.



The home site, situated on one of the larger ponds, is well landscaped with numerous trees and shrubs





Pure spring water feeds the three ponds on the property, and also supplies the pivots. The water tests pure enough to bottle! The ponds are home and habitat for a variety of fish, including Coy, trout, bluegill and white amur. The tall grasses and crystal clear water provides perfect habitat for ducks and geese.



Insulated 1200 sq ft shop has a concrete floor and automatic doors.

*Corrals,
barn and tack room*



Ranch Information

BLM allotment for 125 head right out the door

51 head allotment up Challis Creek

Pivots are three years old

Seller says produces approximately 1000 tons of hay per year

Home is 3 bedrooms down, master suite upstairs.

Three ponds, fed by springs. Pivots use spring water

Domestic well is 60' – 80 gpm per owner

Main pond has coy, trout, blue gill, white amu

Spring water has tested pure